

Doctoral Student Union Malmö

Malmö University, March 11th
2015



DOKTORANDKÅREN
MALMÖ

Today...

1. Who we are, what we do and why
2. Activity Plan 2015
3. Activity Plan implementation through representation and membership

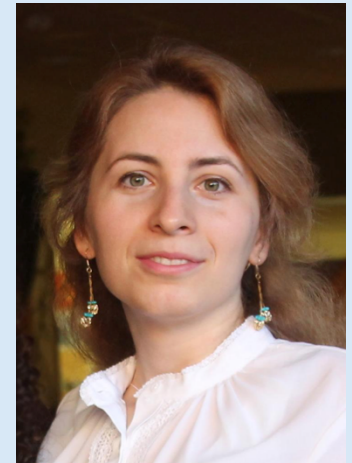
DSU Board 2015



Erik Karlsson (LS)
President



Erliza Lopez Pedersen (KS)
Coordinator for doctoral collegiums



Zahra Hamidi (KS)
Communications officer



Dimitris Paraschakis (TS)
Treasurer



Claudia Fonseca (KS)
Communications officer



Maria Rubin (LS)
Mentorship coordinator



Eric Snodgrass (KS)
Vice President

What is the difference between a trade and a doctoral union?

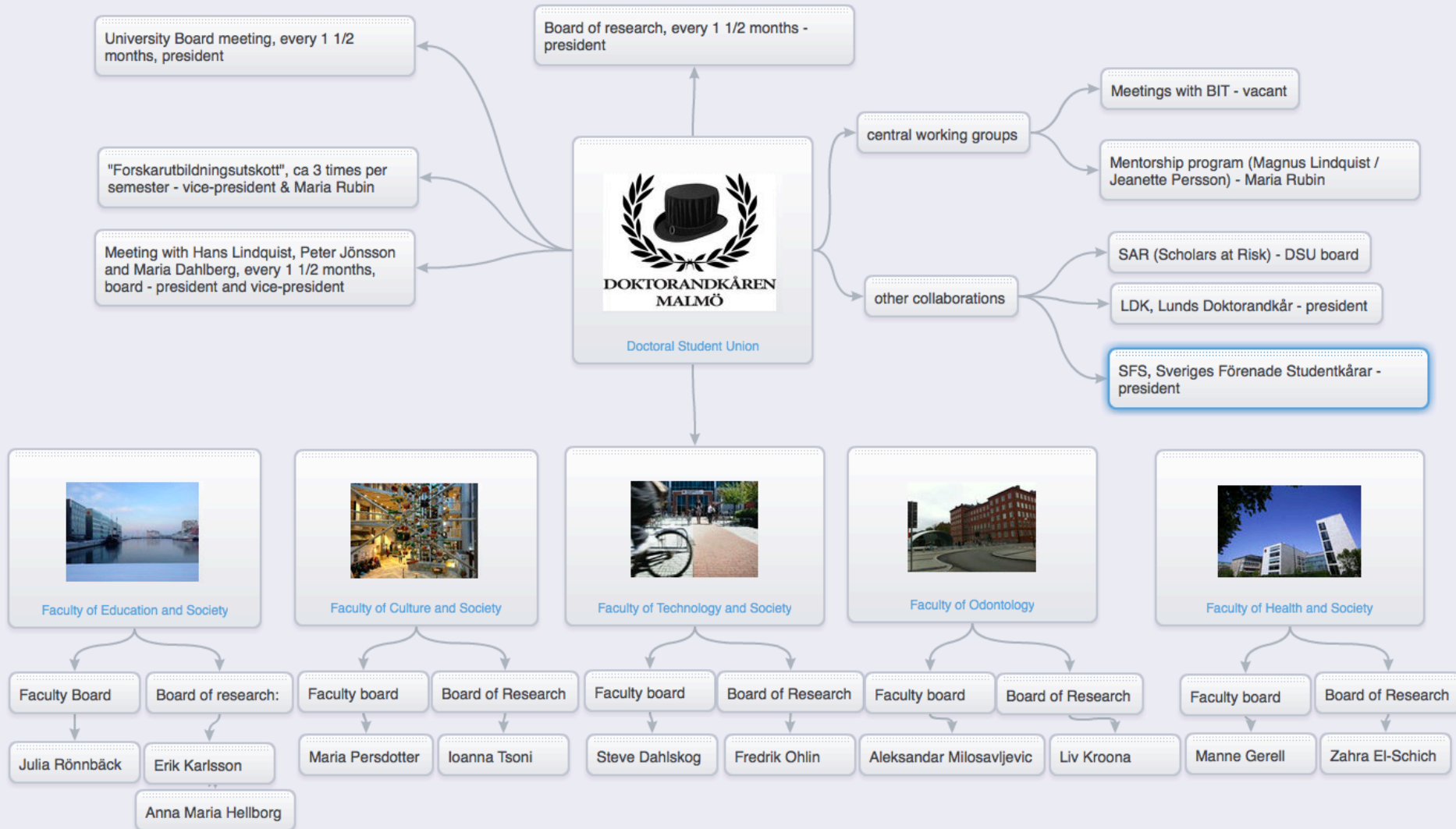
Trade union (facket – ST, SULF)

- Labor issues. Ex. Working conditions
- Negotiation of contracts

Doctoral student union

- Issues related to doctoral students' rights: access to education and resources, supervisors, ISP
- Cooperation with/insight to and influence on all levels of MU (representation/membership)
- Source of information and point of contact
- Support and advice during conflicts

Representation



DSU Activity Plan (AP) 2015

Main goals:

1. Website and Communications
2. Continued work to appoint a part-time doctoral student ombudsman (covering PhD rights and complaints)
3. Routines for introduction of new doctoral students
4. Increase the role of the doctoral collegiums at the faculties
5. The Swedish National Union of Students (SFS)
6. Survey. Employment status of PhD students

Website and Communications

Aims

- Provide more information about a PhD student's rights and obligations. Ex. ISP, supervisors, access to education
- More info on academic life. Ex. Tips on where to apply for research grants; courses and conferences outside MU
- Include more information relevant to PhD students that are new to Sweden
- Improved communication between doctoral students through a Facebook page

Routines for introduction of new doctoral students

Problems

- The admission process can be unstructured
- Who guarantess that newly admitted doctoral students receive all important information?

Aims

- Create routines for the admission process
- Ensure that the DSU is informed about new doctoral students

Appointing a part-time doctoral student ombudsman

Problems

- PhD students risk falling in between chairs with their research education and employment.
- There is no central point of contact where PhDs can register complaints, discuss PhD rights, and receive legal advice from.

Aims

- The DSU is working on a way to implement a doctoral student ombudsman at Malmö University.

Increase the role of the doctoral collegiums at the faculties

Problems

- PhDs need a place within their own faculties to raise issues effecting their roles and situations as PhDs.

Aims

- To further the bottom-up structure and support of the DSU through engaging PhD students with all levels via the five doctoral collegiums in each of the faculties.

The Swedish National Union of Students (SFS)

Aims

- Make the doctoral student union at Malmö University a member of the Swedish National Union of Students (SFS).
- This will allow us access to a national network of students and doctoral students and make the DSU a legitimate voice in the ongoing national debate on student issues.
- It also makes it possible for the DSU to promote and further the interests of doctoral student at a national level.

Survey: Employment status of PhD students

Problems

- The current statistical information available relating to certain PhD issues is inadequate.

Aims

- The DSU will seek to obtain statistical information on employment status and source of financing of PhD students.

Higher Education Act

Rights and Obligations (above all, chapters 5-7):

- Supervisors, duration and teaching responsibilities
- ASP (Allmän Studieplan/General Study Plan) & ISP (Individuell Studieplan/Individual Study Plan)

Mecenat Card

Makes you eligible for student discounts

- Skånetrafiken, SJ
- Mobile phones contracts, computers, and other gadgets
- Books, newspapers, clothes, food (e.g. Ica), restaurants, newspapers, sports and training and a lot more!

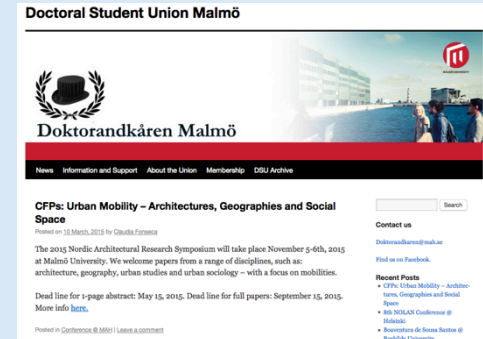


Why join the DSU?

- Enable and support the work of the DSU board and its representatives
- Influence those organizational and structural levels at the University that have an immediate impact on your doctoral studies and your work environment
- Get support and advice during conflicts
- Learn more about your rights as a PhD student
- Create networks with other doctoral students
- Apply to MAH's mentorship program for career planning
- Save money with a discount card through Mecenat

Helpful links

DSU website: <http://www.doktorandkaren.se/>



DSU facebook page:
search for “Doctoral Student
Union Malmö”



Doctoral studies site: <http://studera.nu/startpage/doctoral-studies/doctoralstudies/>



Welcome to the DSU!

As a member!

To become a member: send us an e-mail with your name, Swedish personal number, home address and faculty, and transfer **120 SEK/semester** to
Plusgiro 654080-1

As a representative!

As a future member of the board!

Contact & Questions

doktorandkaren@mah.se

www.doktorandkaren.se

Phone: 0725648341

