



Doctoral Student Union Malmö

2021

Outline

1. The Doctoral Student Union and Doctoral organisation at Mau.
2. Support- where to turn if there is trouble?
3. The DSU current prioritized goals
4. How to find information about rights and obligation of being a phd student?
5. Questions?
6. How to become a member? Contact!



DSU Main goals

- The main goal of the DSU is to monitor and participate in the development of postgraduate education for all doctoral students at Malmö University
- By actively and continuously partaking in conversations on all administrative levels of MAU, the DSU's ambition is to create and maintain influence in the decision making process of areas that touch upon the education, research environment and employment of doctoral students.

The three roles of doctoral student

- Student

- Rights as a student, ISP, supervision, education, access to academic recourses.

- Employed / + either by the university or an other part (not everyone)

- Labour laws, social security systems, the right to a good work environment

- Researcher

- does research as a part of the education, have the same ethical responsibilities as other researchers.

What is the difference between a trade and a doctoral union?

Trade union (facket – ST, SULF)

- Labor issues. Ex. Working conditions
- Negotiation of contracts

Doctoral student union

- Issues related to doctoral students' rights: access to education and resources, supervisors, ISP
- Cooperation with/insight to and influence on all levels of MAU
- Source of information and point of contact
- Support and advice



Doctoral support

- Advise doctoral student how to make use of their rights as students and employees at Malmö University.
- Advise doctoral students how to seek and apply for help within and outside of the university.
- Give doctoral students support and guidance in case of conflicts.

Christian Stråhlman, research coordinator and doctoral support at Malmö University.

Phone no: 040- 6657137 Email: christian.strahlman@mau.se



DSU Board 2021

Elsa Andersson (LS)
Chair

Carolina Robertsson (OD)
Vice-chair

Roel Roscam Abbing (KS)
Treasurer

Isobel Squire (KS)
Event coordinator

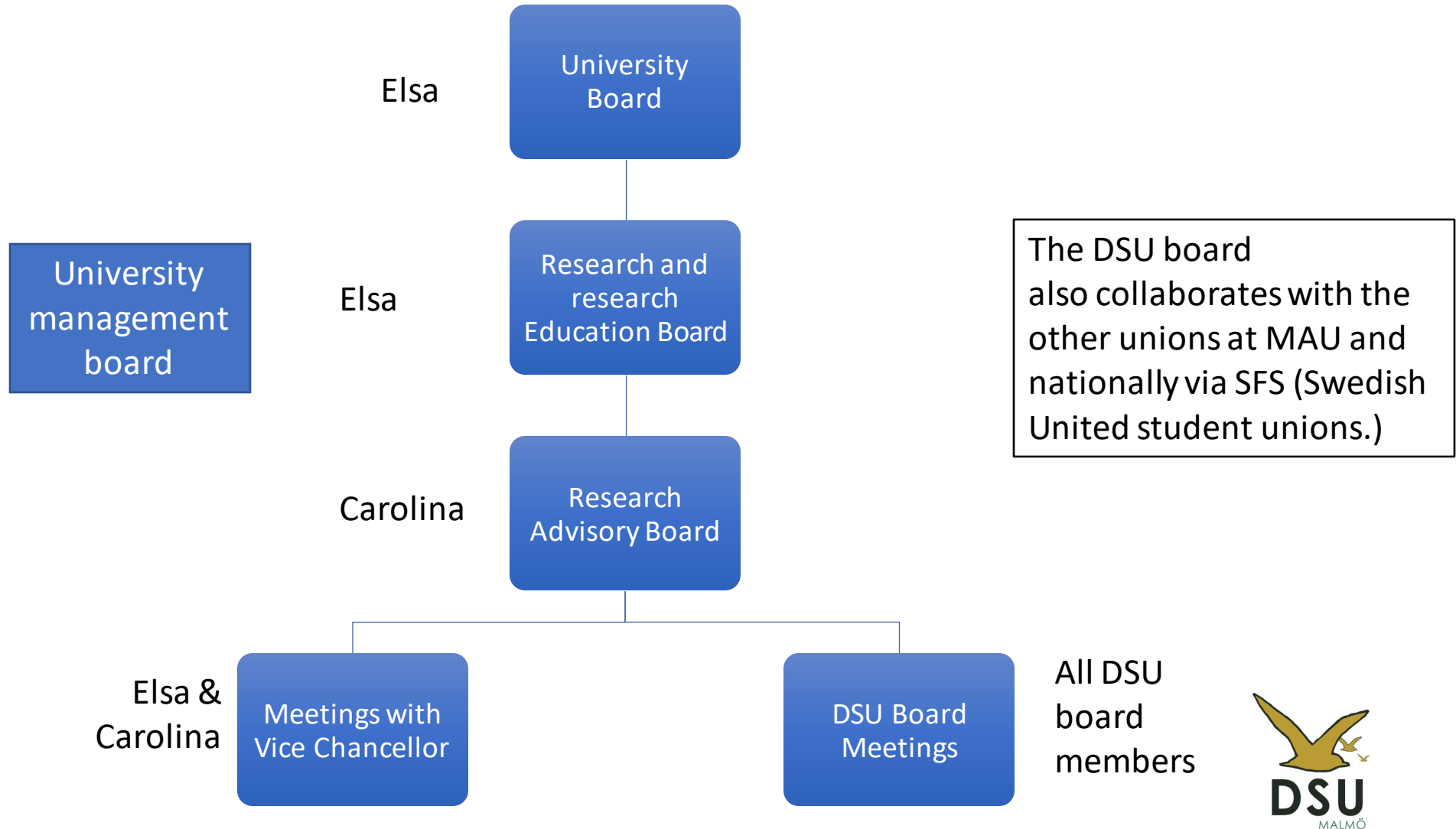
Sergei Dytckov (TS)
Board member

Juliana Holeksa (HS)
Board member



DSU

Organisation University level



PhD influence on faculty and department level

- **Faculty boards**
- **Research and research education boards (FUN/ FNN)**
- **Supervisory collegiums**

-We have a right to have

PhD representation in all these instances.

-Representation is reimbursed in time. Days or hours that prolongs your research time

(usually between 5-10 days/ year).

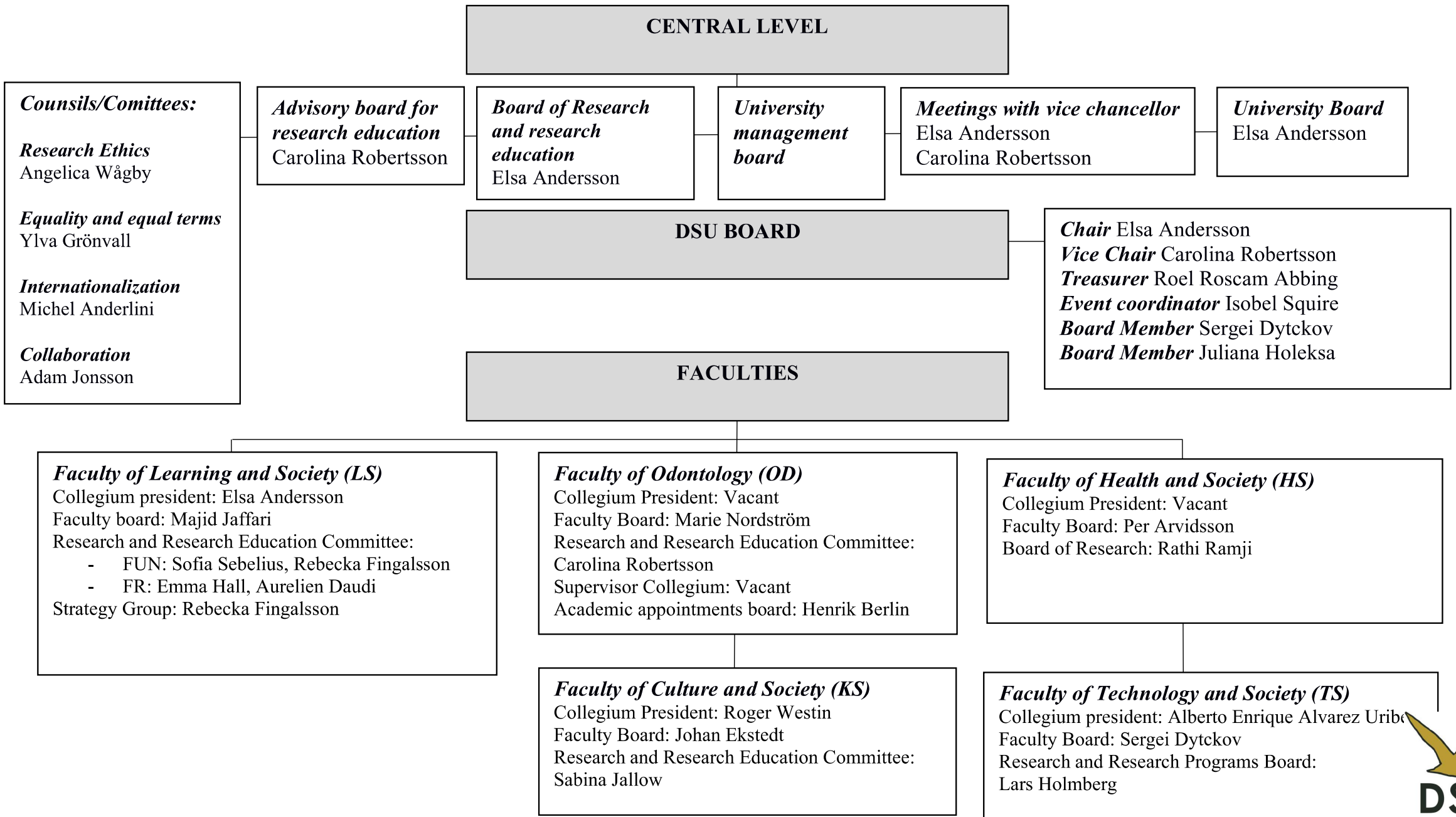
- **Doctoral collegiums**

-are run by PhD students as a place for exchanging information and discuss PhD matters

-The chair of the doctoral collegium receives between 10-20 / year for planning and hosting meetings.

Three out of five faculties currently have doctoral collegiums.





DSU prioritized goals 2021

- Monitor how the effects of the pandemic affect PhD students health, education and work. As well as follow up the MAU guidelines on the pandemic.
- Information and communication- central source of information
- PhD students work-environment
- Inclusion of international PhD students + language policy
- Doctoral ombudsman
- Collaboration between PhD students nationally and within the university

DSU International chapter

As a result of continuing issues concerning the language policy at Malmö University the DSU have started an international chapter.

- Improve information for international PhD students
- Arrange social events
- Lobby for expanded support regarding housing, visa applications and other issues that arise for students that are new in sweden.



Report on the impact of the Corona pandemic for Doctoral students at Malmö University

2021-03-30

- SFS and the SFS-DK previously made the report:
- Consequences for Doctoral students due to the corona pandemic. August 2020
- <https://sfs.se/new-report-consequences-for-doctoral-students-due-to-the-corona-pandemic/>



Malmö DSU survey

- The survey was sent out to all active doctoral students at malmö University november 2020 (ca270)
- As a follow up to the national reports on PhD students situation due to the pandemic.
- About one third of the PhD students responded.
- Why
 - to understand how the ongoing Covid-19 pandemic has affected doctoral candidates at Malmö University,
 - to inform the ways in which the DSU can continue to support the doctoral candidates' rights to a high-quality doctoral education and healthy work environment.
 - to add information on the nature of intangible delays to inform ongoing discussions about delays and prolongations.



Some of the findings:

- **Decrease in quality of the doctoral education.** Lack of research resources, cancellation of courses/conferences/seminars/, hinders in realizing certain aspects of research.
- **Health aspects.**- isolation, increased stress, difficulties to maintain work-life balance.
- **Information deficiency.**- information is difficult to find, the information is not helpful.
- **Issues related to delays and uncertainties about prolongations:**
 - how will prolongations be assessed?
 - Will it be a fair process?
 - What will count as grounds for prolongation?

Some of the DSUs ongoing work as a result of the survey

- Continue to monitor how the guidelines for PhD students on documenting delays works
- Monitor and follow up on the prolongation processes.
- Continue discussions about the doctoral students situation in PhD forums
- Work on a central level to help and influence the university to provide a central source of information.
- See to it that the university continues to maintain and improve phd students work environment.

The full report can be found on the DSU
webpage: <https://www.doktorandkaren.se/wp-content/uploads/2021/04/Malmo%CC%88DSU-report-on-the-pandemic.pdf>



Some important information sources

- Doktorand handboken – The doctoral student handbook.
- The ASP (the general studyplan)-one for each subject area, contains the requirements to be awarded a degree, legally binding, (+ ISP).
- The Mau employe webpage:
<https://staff.mau.se/tools-and-services/research-support/for-doctoral-students/>

Laws and regulations:

Higher education ordinance:

<https://www.uhr.se/en/start/laws-and-regulations/Laws-and-regulations/The-Higher-Education-Ordinance/>

Higher education act:

<https://www.uhr.se/en/start/laws-and-regulations/Laws-and-regulations/The-Swedish-Higher-Education-Act/>

Employment:

<https://sulf.se/en/work-salary-and-benefits/doctoral-candidate/employed-as-a-doctoral-candidate/>



Do you have any questions?

How do I become a member?

Sign up through our website!

Where can I find this presentation?

On our website, link is in the chat!

Want to get involved?

Get in touch with us by mail!

Contact:

General inquiries DSU: doktorandkaren@mau.se

Issues concerning memberships, contact : members.dsu@mau.se

Elsa Andersson, chair: elsa.andersson@mau.se

Roel Roscam Abbing, treasurer/responsible of memberships: roel.roskam-abbings@mau.se

Website: <https://www.doktorandkaren.se/>

